




## Project Sea Dragon

### EPBC 2015/7527 ANNUAL COMPLIANCE REPORT STAGE 1 LEGUNE GROW-OUT FACILITY

14 December 2021

#### DECLARATION OF ACCURACY

In making this declaration, I am aware that sections 490 and 491 of the *Environment Protection and Biodiversity Conservation Act 1999* (Cth) (EPBC Act) make it an offence in certain circumstances to knowingly provide false or misleading information or documents. The offence is punishable on conviction by imprisonment or a fine, or both. I declare that all the information and documentation supporting this compliance report is true and correct in every particular. I am authorised to bind the approval holder to this declaration and that I have no knowledge of that authorisation being revoked at the time of making this declaration.

|              |                                                                                    |
|--------------|------------------------------------------------------------------------------------|
| Signed       |  |
| Full Name    | IAN BRANNAN                                                                        |
| Position     | DIRECTOR                                                                           |
| Organisation | Project Sea Dragon Pty Ltd                                                         |
| ABN          | 11 604 936 192                                                                     |
| ACN          | 604 936 192                                                                        |
| Date         | 15 / 12 / 21                                                                       |

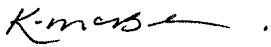
## PROJECT AND DOCUMENT DETAILS

|                    |                                                                       |
|--------------------|-----------------------------------------------------------------------|
| Proponent:         | Project Sea Dragon Pty Ltd<br>ACN: 604 936 192                        |
| Project Title:     | Project Sea Dragon Stage 1 Legume Grow-out Facility                   |
| EPBC Act Referral: | EPBC 2015/7527                                                        |
| Location:          | Legume Station, Northern Territory<br>NT Portion 798 and Portion 3222 |
| Report Title:      | EPBC 2015/7527 Annual Compliance Report                               |

## DOCUMENT CONTROL

| Revision | Description | Author/Amended by | Date       |
|----------|-------------|-------------------|------------|
| a        | Draft       | Katie O'Neill     | 1/12/2021  |
| 0        | Final       | Katie O'Neill     | 13/12/2021 |

## DOCUMENT AUTHORISATION

| Approved by | Position              | Date       | Signature                                                                             |
|-------------|-----------------------|------------|---------------------------------------------------------------------------------------|
| Kate McBean | Environmental Manager | 14/12/2021 |  |

## CONTENTS

|      |                         |    |
|------|-------------------------|----|
| 1    | Introduction .....      | 1  |
| 1.1  | About the Project ..... | 1  |
| 2    | Compliance Status ..... | 2  |
| 2.1  | Condition 1 .....       | 2  |
| 2.2  | Condition 2 .....       | 2  |
| 2.3  | Condition 3 .....       | 4  |
| 2.4  | Condition 4 .....       | 4  |
| 2.5  | Condition 5 .....       | 5  |
| 2.6  | Condition 6 .....       | 6  |
| 2.7  | Condition 7 .....       | 7  |
| 2.8  | Condition 8 .....       | 8  |
| 2.9  | Condition 9 .....       | 9  |
| 2.10 | Condition 10 .....      | 9  |
| 2.11 | Condition 11 .....      | 10 |
| 2.12 | Condition 12 .....      | 10 |
| 2.13 | Condition 13 .....      | 10 |
| 2.14 | Condition 14 .....      | 12 |
| 2.15 | Condition 16 .....      | 13 |
| 2.16 | Condition 17 .....      | 13 |
| 3    | Summary.....            | 16 |

## LIST OF FIGURES

|                                                                                     |    |
|-------------------------------------------------------------------------------------|----|
| Figure 1: Distance between construction camp and Turtle Point.....                  | 6  |
| Figure 2: Design drawing of the rigid mesh grill for the seawater intake pipe ..... | 11 |

## LIST OF PHOTOS

|                                                                                                      |    |
|------------------------------------------------------------------------------------------------------|----|
| Photo 1: Mangrove clearing for the sea water intake pipe and infrastructure (30 November 2021) ..... | 7  |
| Photo 2: Sawfish and rivershark sign – Legune Station .....                                          | 8  |
| Photo 3: Sawfish and rivershark sign – Alligator Creek .....                                         | 9  |
| Photo 4: Construction camp .....                                                                     | 14 |
| Photo 5: Construction of the nursery ponds .....                                                     | 14 |
| Photo 6: Nursery pond embankment .....                                                               | 15 |
| Photo 7: Construction of the seawater intake hardstand.....                                          | 15 |

## LIST OF TABLES

|                                                                        |    |
|------------------------------------------------------------------------|----|
| Table 1: Summary of compliance status for each approval condition..... | 16 |
|------------------------------------------------------------------------|----|

# 1 INTRODUCTION

On 10 May 2017, Project Sea Dragon Pty Ltd (PSD) was issued approval under the Australian Government *Environment Protection and Biodiversity Conservation Act 1999* (EPBC Act) for the Project Sea Dragon Stage 1 Legume Grow-out Facility (the Project) (Reference No. EPBC 2015/7527).

As advised in a letter to the Department of Environment and Energy (now the Department of Agriculture, Water, and the Environment) on 9 October 2018, construction works for the Project commenced on 26 September 2018. Condition 12 of the EPBC Act approval for the Project requires that:

*Within three months of every 12-month anniversary of the commencement of the action, the person taking the action must publish a report on their website addressing compliance with each of the conditions of this approval, including implementation of any management plans as specified in the conditions. Documentary evidence providing proof of the date of publication and non-compliance with any of the conditions of this approval must be provided to the Department at the same time as the compliance report is published.*

In accordance with Condition 12, this Annual Compliance Report documents compliance with the conditions of the EPBC Act approval for the period 26 September 2020 to 25 September 2021 (reporting period). The report has been published on the PSD website.

## 1.1 ABOUT THE PROJECT

The Project is a large-scale, integrated, land-based prawn aquaculture project to be developed in northern Australia. It has been designed to produce high-quality, year-round reliable volumes for export markets for black tiger prawns (*Penaeus monodon*).

The Project is located on Legume Station, an operating pastoral lease situated approximately 106 km north-east of Kununurra on the western border of the Northern Territory. It involves the construction and operation of three prawn grow-out farms, which include 1,120 ha of grow-out ponds, as well as associated water supply and discharge infrastructure. Legume Station will also support ancillary infrastructure needed to support the farms, including accommodation facilities, a power station, trades workshops and laboratories.

## 2 COMPLIANCE STATUS

The compliance status for each approval condition is presented in the following sections. Each condition has been assigned a status based on the following criteria:

- **Compliant** - the requirements of the condition have been completely satisfied and/or ongoing compliance has been maintained.
- **Non-compliant** - the requirements of the condition, or elements of the condition, have not been satisfied.
- **Not Applicable** - the requirements of the condition, or elements of the condition, fall outside the scope of the current reporting period. For example, when a condition relates to operational activities which are yet to commence.

Where required, additional information has been provided to support the assigned compliance status.

### 2.1 CONDITION 1

#### 2.1.1 Description

To protect habitat for listed threatened and migratory species, wastewater discharges to Alligator Creek as a result of the action:

- a) must not exceed the mean and maximum limits for the following wastewater quality parameters:

|                               | Mean | Maximum |
|-------------------------------|------|---------|
| Total nitrogen (mg/L)         | 0.8  | 3.0     |
| Total phosphorus (mg/L)       | 0.1  | 0.3     |
| Total suspended solids (mg/L) | 20   | 100     |

- b) must be restricted to an annual average daily discharge rate of less than 420 ML/day
- c) must only occur from one hour prior to the Alligator Creek ebb tide and cease 5.5 hours before the Alligator Creek ebb tide ends.

#### 2.1.2 Compliance Status

##### **Not Applicable**

Operational activities associated with the Project have not yet commenced. Therefore, wastewater discharges to Alligator Creek did not occur during the reporting period.

### 2.2 CONDITION 2

#### 2.2.1 Description

To protect habitat for listed threatened and migratory species, the person taking the action must develop a Water Quality Monitoring and Management Program (WQMMP). The WQMMP must be prepared in consultation with an appropriately qualified independent scientific expert whose appointment has been approved in writing by the Minister. The WQMMP must be approved by the Minister and implemented a minimum of 12 months prior to the discharge of any wastewater.

The WQMMP must:

- a) explain how the WQMMP will protect the receiving environment from wastewater discharges, including the functional relationship between monitoring objectives, activities and operational decisions
- b) define the chemical, physical and biological parameters to be monitored in the receiving environment, including during the minimum 12-month period of baseline water quality monitoring, and justify the parameters to be monitored
- c) modify and/or confirm the wastewater quality parameter limits in condition 1(a) and the wastewater release regime in condition 1(c)
- d) include a methodology to:
  - i. monitor water quality parameters in condition 1(a) during both baseline data collection and operations and measure discharge volumes in condition 1(b)
  - ii. develop site-specific water quality objectives and seasonal trigger values for water quality parameters identified in condition 1(a) and 2(b)
  - iii. modify and/or confirm the wastewater quality parameter limits specified in condition 1(a) are appropriate relative to the trigger values developed under condition 2(d)(ii)\
  - iv. modify and/or confirm the wastewater release regime specified in condition 1(c) in accordance with the Guidelines for Fresh and Marine Water Quality
- e) include a data handling program and commitments to technical review and evaluation of the WQMMP
- f) identify and manage the risks of the WQMMP failing to achieve its objectives
- g) describe contingency responses where management triggers are exceeded, and effective corrective actions which may be implemented.

When the person taking the action submits the WQMMP to the Minister for approval, they must also provide a copy of the advice of the independent scientific expert on the WQMMP. The approved WQMMP must be implemented.

### 2.2.2 Compliance Status

#### **Compliant**

The Project Sea Dragon Stage 1 Legume Grow-out Facility Water Quality Monitoring and Management Plan (WQMMP) was prepared to address Condition 2 of the EPBC Act Approval. The plan was reviewed by an independent scientific expert, Dr Darren Richardson, whose appointment was approved in writing by the Minister on 5 July 2017.

The WQMMP was approved by the Minister on 2 July 2019. The Minister confirmed that the WQMMP met the requirements of Condition 2.

The approved WQMMP is available on Project Sea Dragon's website:

<https://seafarms.com.au/documentation/>

On 1 November 2021 newly appointed Executive Chairman Mick McMahon initiated a review of the Project. This review is expected to take several months and will consider the Project schedule. It is not anticipated that discharge of wastewater would occur in the next reporting period (i.e. 26 September 2021 to 25 September 2022). Once the Project schedule is confirmed, PSD will recommence the implementation of the WQMMP at least 12 months prior to the discharge of any wastewater.



## 2.3 CONDITION 3

### 2.3.1 Description

The person taking the action must appoint, support and maintain a Scientific Advisory Group (SAG) to advise on matters relating to listed threatened and migratory waterbirds potentially impacted by the proposed action.

Terms of reference for the SAG, which must include roles and responsibilities, membership (including an independent chair), timeframe for commencement, frequency of proposed meetings and quorum arrangements, must be developed by the person taking the action and submitted to the Minister in writing within two months of the date of this approval.

The Minister may seek advice from the SAG at any time.

### 2.3.2 Compliance Status

#### **Compliant**

A Terms of Reference for the Scientific Advisory Group (SAG) was developed and submitted to the Minister on 2 June 2017.

The Department of Environment and Energy (now the Department of Agriculture, Water, and the Environment) confirmed via email on 5 June 2017 that the Terms of Reference were received within two months of the approval decision and that it satisfied the requirements of Condition 3.

Pending the outcomes of the Project review and schedule amendments, the SAG will be appointed to advise on the development and implementation of the Waterbird Monitoring and Impact Mitigation Program in accordance with Condition 4.

## 2.4 CONDITION 4

### 2.4.1 Description

The person taking the action must develop and implement a Waterbird Monitoring and Impact Mitigation Program (WBMIMP). The WBMIMP must be designed to monitor impacts to listed threatened and/or migratory waterbirds:

- a) from the time flows to wetlands from Forsyth Creek Dam are altered as a result of the proposed action
- b) including bird predation management measures to non-predator waterbird species, including human disturbance and the operation of drones and helicopters
- c) including any additional information as the SAG sees fit within the scope of the terms of reference.

The WBMIMP must:

- d) monitor changes in waterbird composition, abundance and habitat usage
- e) apply limits of acceptable change to waterbird usage of freshwater wetlands
- f) allow for an adaptive management response in the event that exceedances of limits of acceptable change are observed.

The person taking the action must seek advice from the SAG on: formulating and drafting the WBMIMP; and any revisions proposed to the approved WBMIMP, and the person taking the action must include all comments and recommendations provided by members of the SAG with the draft submitted for initial approval and that are relevant to any revision to the WBMIMP sought under condition 14.

The SAG must be invited to assess and provide advice on any exceedances of the limits of acceptable change, and on response action taken by the person taking the action. The person taking the action must consider the advice of the SAG in determining whether further action is needed. Details on exceedances of limits of acceptable change, all comments provided by members of the SAG and any additional response action taken as a result of the advice of the SAG must be included in the annual compliance report (Condition 12).

The WBMIMP must be submitted to and approved by the Minister prior to the alteration of flows from Forsyth Creek Dam. The approved WBMIMP must be implemented.

#### 2.4.2 Compliance Status

##### **Not Applicable**

Flows to wetlands from Forsyth Creek Dam have not been altered as a result of the proposed action.

On 1 November 2021 newly appointed Executive Chairman Mick McMahon initiated a review of the Project. This review is expected to take several months and is expected to result in amendments to the Project schedule. It is not anticipated that alteration of flows from Forsyth Creek Dam as a result of the Project would occur in the next reporting period (i.e. 26 September 2021 to 25 September 2022). Pending the outcomes of the Project review and schedule amendments, the SAG will be appointed to advise on the development and implementation of the Waterbird Monitoring and Impact Mitigation Program in accordance with Condition 4.

## 2.5 CONDITION 5

#### 2.5.1 Description

To minimise noise impacts to nesting flatback turtles (*Natator depressus*), the person taking the action must implement the following measures during impact piling activities:

- a) pre-start-up visual observations: visual observations for marine turtles must be undertaken to the extent of the piling observation zone by a suitably trained individual for at least 30 minutes before the commencement of piling activities
- b) operating procedures: while piling is undertaken, the following procedures must be implemented:
  - i. visual observations of a 600-metre radius from the pile hammer must be maintained continuously to detect the presence of marine turtles
  - ii. the exclusion zone must be no less than a 500-metre radius for marine turtles
  - iii. if marine turtles are sighted within the exclusion zone, piling activities within the exclusion zone must cease within 2 minutes or as soon as safely possible
  - iv. piling activities must not recommence until marine turtles are observed to move outside the exclusion zone or 30 minutes have passed since the last sighting
  - v. soft 'fairy taps' start procedures: piling activities must be initiated at the soft 'fairy taps' start level and then build up to full operating impact force. The soft 'fairy taps' start procedures may only commence if no marine turtles have been sighted within the relevant exclusion zone during the pre-start-up visual observations.

#### 2.5.2 Compliance Status

##### **Not Applicable**

No impact piling activities have been undertaken to date. As such, no noise impacts from piling activities occurred during the reporting period.

## 2.6 CONDITION 6

### 2.6.1 Description

To minimise light pollution impacts to nesting flatback turtles (*Natador depressus*) and hatchlings, the person taking the action must, subject to minimum requirements for safety purposes, restrict artificial lighting by:

- a) using lights of a wavelength to which flatback turtle hatchlings are not sensitive
- b) ensuring lighting is directed away from Turtle Point and reflective materials
- c) mounting lights as low as practicable
- d) using timer and motion sensors to run off lights when not in use.

### 2.6.2 Compliance Status

#### Not Applicable

No Project construction activities have been undertaken at night. The only light associated with Project construction is at the temporary camp which accommodates a maximum of 76 site personnel. The camp is located 45 km from Turtle Point (see Figure 1). As described in the Project's Supplementary Environmental Impact Statement, given the significant distance between the camp and Turtle Point it is considered highly unlikely that light from the construction camp would result in light pollution impacts to nesting flatback turtles.



Figure 1: Distance between construction camp and Turtle Point

## 2.7 CONDITION 7

### 2.7.1 Description

To protect dwarf sawfish (*Pristis clavata*) and green sawfish (*Pristis zijsron*) from impacts resulting from the installation of:

- a) a pumping station adjacent to Forsyth Creek and
- b) a seawater intake channel extending from Forsyth Creek to the project area with a footprint of 54.64 hectares and
- c) an effluent discharge outfall structure at Alligator Creek

the person taking the action must ensure that no more than 9.3 ha of mangrove forest habitat is cleared (in total) within the area depicted on the map at Attachment A.

### 2.7.2 Compliance Status

#### Compliant

At the date of this report approximately 3 ha of mangrove vegetation has been cleared for the seawater intake pipe and associated infrastructure. A site audit assessing compliance with the Acid Sulfate Soil Management Plan was undertaken on 25 October 2021 by Dr Ian Hollingsworth (CPSS S00446). The audit report states that:

*‘The performance of the mangrove clearing operations on high-risk acid sulfate soil areas at the Seawater Inlet was exemplary. The track construction method incorporating a low ground pressure mulching machine, Geoweb and gravel laid over the mulched vegetation, which was a variation from plan, was an improvement on plan’.*



Photo 1: Mangrove clearing for the sea water intake pipe and infrastructure (30 November 2021)



## 2.8 CONDITION 8

### 2.8.1 Description

To protect listed threatened and migratory sawfish and river shark species from impacts of recreational fishing, the person taking the action must:

- provide educational materials to employees about the protected status of sawfish and river shark species
- install signage next to the Alligator Creek and Keep River waterways that promote the protected status of sawfish and river shark species and include identification guides, safe release guidelines and encourage recreational fishers to report any interactions with these species.

### 2.8.2 Compliance Status

#### Compliant

Educational material about the protected status of sawfish and rivershark species has been provided to employees and contractors through the environmental inductions and is presented in Appendix A. A total of 192 employees or contractors have completed the induction to date.

Signage (see Appendix B) about the protected status of sawfish and river shark species has been installed at two locations:

- At the entrance to Legune Station (Photo 2)
- In the upstream reaches of Alligator Creek (Photo 3)

While Condition 8 states that the signage must also be installed next to the Keep River waterway, it was determined that there is no suitable location in that area and access to Keep River is extremely limited. Alternatively, it was decided that the entrance to Legune Station, which is the primary access point for the site, would allow for most visibility to employees, contractors, visitors as well as the public. Additional signs can be installed should it be deemed necessary to further promote the protected status of these species.



Photo 2: Sawfish and rivershark sign – Legune Station



Photo 3: Sawfish and rivershark sign – Alligator Creek

## 2.9 CONDITION 9

### 2.9.1 Description

To protect listed threatened and migratory sawfish and river shark species from entrainment and entrapment, the seawater intake pipe at Forsyth Creek must:

- a) be fitted with a rigid mesh grille with a 100-millimetre aperture
- b) operate with a maximum velocity of 0.4 m/s.

### 2.9.2 Compliance Status

#### Not Applicable

The seawater intake pipe is yet to be constructed. However, engineering design for the pipe includes a rigid mesh grille with a 90-millimetre aperture and the capacity to operate to a maximum velocity of 0.4m/s. The design for the mesh grill is shown in Figure 2.

## 2.10 CONDITION 10

### 2.10.1 Description

Within 30 days after the commencement of the action, the person taking the action must advise the Department in writing of the actual date of commencement.

### 2.10.2 Compliance Status

#### Compliant

PSD advised the Department of Environment and Energy (now the Department of Agriculture, Water, and the Environment) in writing on the 9 October 2018 that early works for the Project commenced on the 26 September 2018.

## 2.11 CONDITION 11

### 2.11.1 Description

The person taking the action must maintain accurate records substantiating all activities associated with or relevant to the conditions of approval, including measures taken to implement the monitoring programs required by this approval, and make them available upon request to the Department. Such records may be subject to audit by the Department or an independent auditor in accordance with section 458 of the EPBC Act, or used to verify compliance with the conditions of approval. Summaries of audits will be posted on the Department's website. The results of audits may also be publicised through the general media.

### 2.11.2 Compliance Status

#### **Compliant**

During the reporting period PSD maintained accurate records which substantiate the activities associated with the conditions of the EPBC Act approval. The Department has not requested these records during the reporting period.

## 2.12 CONDITION 12

### 2.12.1 Description

Within three months of every 12-month anniversary of the commencement of the action, the person taking the action must publish a report on their website addressing compliance with each of the conditions of this approval, including implementation of any management plans as specified in the conditions. Documentary evidence providing proof of the date of publication and non-compliance with any of the conditions of this approval must be provided to the Department at the same time as the compliance report is published.

### 2.12.2 Compliance Status

#### **Compliant**

This Annual Compliance Report documents compliance with the conditions of the EPBC Act approval for the period 26 September 2020 to 25 September 2021. This report will be provided to the Department of Agriculture, Water and the Environment and published on the PSD website within three months of the 12-month anniversary of the commencement of the action (i.e. prior to 26 December 2021).

## 2.13 CONDITION 13

### 2.13.1 Description

Upon the direction of the Minister, the person taking the action must ensure that an independent audit of compliance with the conditions of approval is conducted and a report submitted to the Minister. The independent auditor must be approved by the Minister prior to the commencement of the audit. Audit criteria must be agreed to by the Minister and the audit report must address the criteria to the satisfaction of the Minister.

### 2.13.2 Compliance Status

#### **Not Applicable**

The Director did not request an independent audit of compliance during the reporting period.



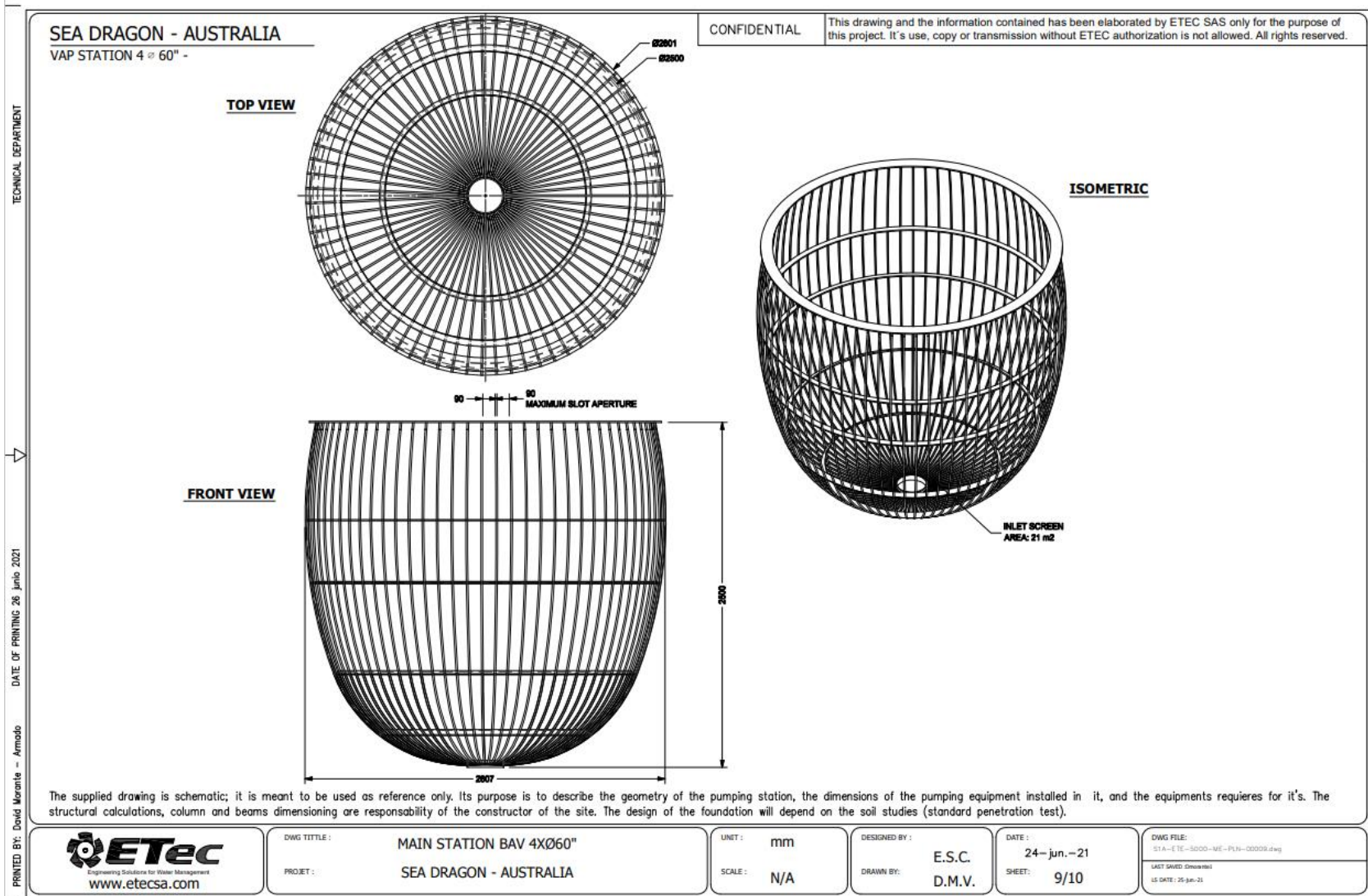


Figure 2: Design drawing of the rigid mesh grill for the seawater intake pipe



## 2.14 CONDITION 14

### 2.14.1 Description

The person taking the action may choose to revise a plan approved by the Minister under conditions 2 and 4 without submitting it for approval under section 143A of the EPBC Act, if the taking of the action in accordance with the revised plan would not be likely to have a new or increased impact. If the person taking the action makes this choice they must:

- a) notify the Department in writing that the approved plan has been revised and provide the Department, at least four weeks before implementing the revised plan, with:
  - i. with an electronic copy of the revised plan;
  - ii. an explanation of the differences between the revised plan and the approved plan; and
  - iii. the reasons the person taking the action considers that the taking of the action in accordance with the revised plan would not be likely to have a new or increased impact.

14A. The person taking the action may revoke its choice under condition 14 at any time by giving written notice to the Department. If the person taking the action revokes the choice to implement the revised plan, without approval under section 143A of the EPBC Act, the plan approved by the Minister must be implemented.

14B. If the Minister gives a notice to the person taking the action that the Minister is satisfied that the taking of the action in accordance with the revised plan would be likely to have a new or increased impact, then:

- i. condition 14 does not apply, or ceases to apply, in relation to the revised plan; and
- ii. the person taking the action must implement the plan approved by the Minister.

To avoid any doubt, this condition does not affect any operation of conditions 14 and 14A in the period before the day the notice is given.

At the time of giving the notice, the Minister may also notify that for a specified period of time condition 14 does not apply for the plan required under the approval. Conditions 14, 14A and 14B are not intended to limit the operation of section 143A of the EPBC Act which allows the person taking the action to submit a revised plan to the Minister for approval.

Conditions 14, 14A and 14B are not intended to limit the operation of section 143A of the EPBC Act which allows the person taking the action to submit a revised plan to the Minister for approval.

### 2.14.2 Compliance Status

#### **Not Applicable**

No revisions were made to approved plans associated with Conditions 2 and 4 during the reporting period.

## 2.15 CONDITION 16<sup>1</sup>

### 2.15.1 Description

If, at any time after five years from the date of this approval, the person taking the action has not substantially commenced the action, then the person taking the action must not substantially commence the action without the written agreement of the Minister.

### 2.15.2 Compliance Status

#### Compliant

Substantially commenced is not defined in the EPBC Act or in EPBC 2015/7527. Commenced is defined in EPBC 2015/7527 as *‘the construction of any infrastructure, excluding fences and signage, or clearing of vegetation, associated with the proposed action’*.

The Project is currently in the construction phase. In total, over 550 ha of vegetation within the Project footprint has been cleared, representing approximately 15% of the total permitted clearing area. Following a period of delays due to COVID-19 restrictions, construction work recommenced in June 2021 and the following activities were undertaken in the reporting period:

- vegetation clearing and site preparation,
- operation of the Forsyth Creek and Bundaberg quarries,
- construction of a 76-person accommodation camp,
- commenced construction of grow out ponds and settlement ponds,
- constructed several access roads,
- commenced construction of the jetty access road, and
- built the approx. 1.5 km long sediment pond embankment.

Photos 4 to 7 presented below demonstrate construction activities undertaken in the reporting period.

With over 15% of vegetation clearing complete and the construction of Project infrastructure as outlined above, PSD considers that the action has substantially commenced.

## 2.16 CONDITION 17

### 2.16.1 Description

Unless otherwise agreed to in writing by the Minister, the person taking the action must publish all monitoring programs and reports referred to in these conditions of approval on their website. Each monitoring program and report must be published on their website within 1 month of being approved by the Minister or being submitted under condition 14.

### 2.16.2 Compliance Status

#### Compliant

---

<sup>1</sup> There is no Condition 15 in EPBC 2015/7527

The approved WQMMP (required under Condition 2) was published on the Project Sea Dragon website within 1 month of approval:

<https://seafarms.com.au/documentation/>

The WBMIMP (Condition 4) is yet to be completed and submitted to the Minister for approval and has therefore not been published on the PSD website.

This Annual Compliance Report will also be published on the Project Sea Dragon website by 26 December 2021 in accordance with the requirements of Condition 12.



Photo 4: Construction camp



Photo 5: Construction of the nursery ponds





Photo 6: Nursery pond embankment



Photo 7: Construction of the seawater intake hardstand

### 3 SUMMARY

In accordance with Condition 12 of the EPBC Act approval (2015/7527), this Annual Compliance Report documents compliance with the conditions of approval for the period 26 September 2020 to 25 September 2021. As summarised in Table 1:

- There were zero non-compliances during the reporting period,
- Nine of the conditions were classified as 'Compliant' during the reporting period.
- Seven of the conditions were found to be 'Not Applicable' during the reporting period.

Table 1: Summary of compliance status for each approval condition

| Condition       | Compliant | Non-compliant | Not Applicable |
|-----------------|-----------|---------------|----------------|
| 1               |           |               | ✓              |
| 2               | ✓         |               |                |
| 3               | ✓         |               |                |
| 4               |           |               | ✓              |
| 5               |           |               | ✓              |
| 6               |           |               | ✓              |
| 7               | ✓         |               |                |
| 8               | ✓         |               |                |
| 9               |           |               | ✓              |
| 10              | ✓         |               |                |
| 11              | ✓         |               |                |
| 12              | ✓         |               |                |
| 13              |           |               | ✓              |
| 14              |           |               | ✓              |
| 16 <sup>2</sup> | ✓         |               |                |
| 17              | ✓         |               |                |

<sup>2</sup> There is no Condition 15 in EPBC 2015/7527

## APPENDIX A      Sawfish and Rivershark Induction Material

# Sawfish and River Sharks

- 🍊 Sawfish and river shark species are known or likely to occur within the waterways surrounding Legune Station including:
  - 🍊 Dwarf Sawfish
  - 🍊 Green Sawfish
  - 🍊 Largetooth Sawfish
  - 🍊 Northern River Shark
- 🍊 These species are all protected by Australian and NT Government Environment Laws.

# Sawfish and River Sharks

- Do you know how to identify a sawfish or river shark?
- Sawfish are easy to identify with their unique saw-like nose extension.
- That's how they got their name!
- The river shark can grow up to two metres in length. They have a triangular shaped dorsal fin and a second dorsal fin that is two-thirds of the height of the first one.
- Familiarise yourself with these species by examining the following photos.



Green Sawfish (photo credit: Water Technology)



# Sawfish and River Sharks

Northern River Shark



(photo credit: NT Government)

Freshwater Sawfish



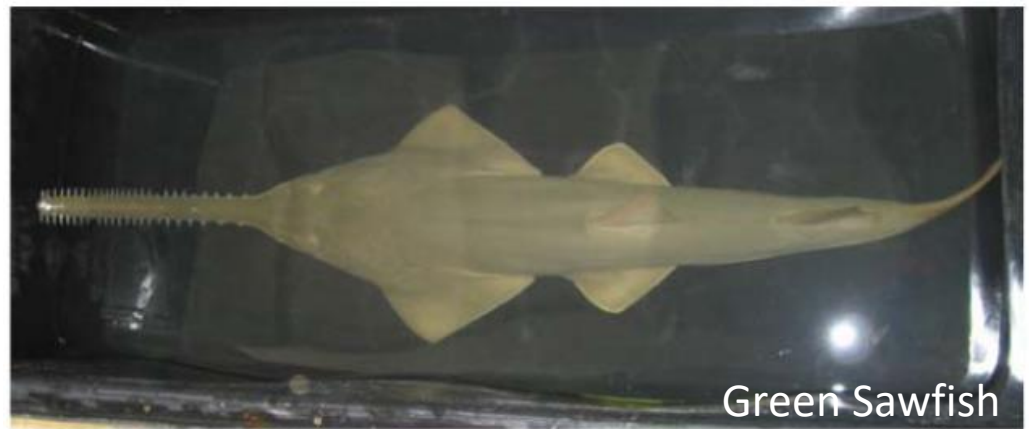
(photo credit: Stirling Peverell)

Dwarf Sawfish



(photo credit: Stirling Peverell)

Green Sawfish



(photo credit: Stirling Peverell)

# Fauna Management

## Protection of Sawfish and River Sharks

- It is an offence to kill, injure, take, trade, keep or move a sawfish or river shark species without a valid permit.
- To protect sawfish and river sharks, **recreational fishing is deemed a prohibited activity** on the Project Site.



# Fauna Management

## Protection of Sawfish and River Sharks

- ✦ If you see a sawfish or river shark:
  - ✦ Sightings provide valuable scientific information
  - ✦ Note the date, location and take a photo (if safe to do so)
  - ✦ Report it to the Site Manager
  - ✦ Report it to Northern Territory Fisheries on [fisheries@nt.gov.au](mailto:fisheries@nt.gov.au)

### Identifying a sawfish

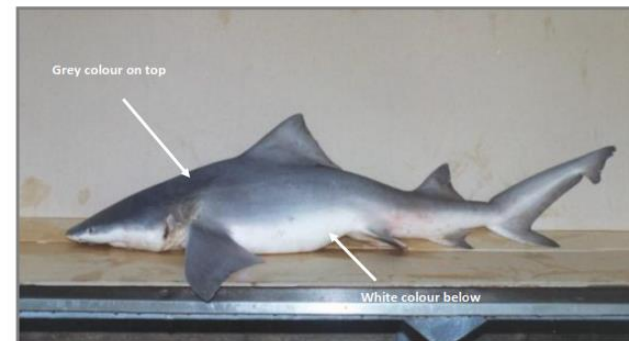
- Sawfish have a flattened body shape and a saw-like snout, called a rostrum
- Dwarf sawfish grow up to 310 cm in length
- Largetooth sawfish and green sawfish can grow up to 700 cm in length



Left: Dwarf Sawfish  
(Photo credit: Water Technology)

### Identifying a northern river shark

- The northern river shark has a stocky body with a high back.
- It is a steel-grey colour above and white below
- The northern river shark can grow up to 200 cm in length



Right: Northern River Shark  
(Photo credit: Northern Territory Government)

## Sawfish and Rivershark Signs



# Notice to Recreational Fishers

## Protected species live in these waters

- Largetooth Sawfish (*Pristis pristis*)
- Dwarf Sawfish (*Pristis clavata*)
- Green Sawfish (*Pristis zijsron*)
- Northern River Shark (*Glyphis garricki*)

## If you catch a sawfish or river shark

- Keep the sawfish or river shark in the water
- Remove the hook and line or cut the line as close to the mouth as possible
- Beware of the sharp teeth on the rostrum of sawfish

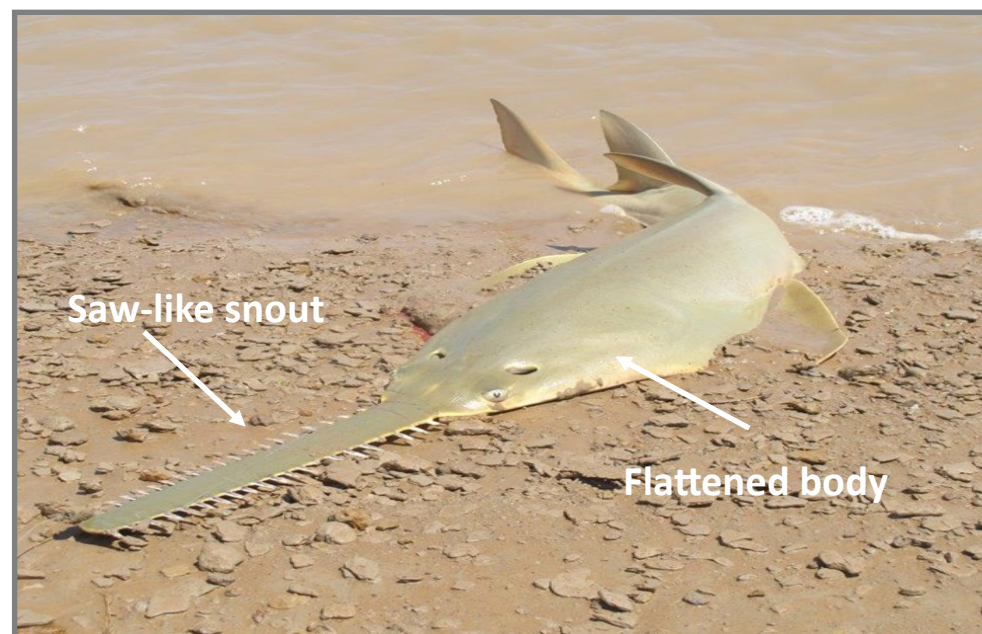
## If you see a sawfish or river shark

- Sightings provide valuable scientific information
- Note the date, location and take a photo (if possible)
- Report to Northern Territory Fisheries on [fisheries@nt.gov.au](mailto:fisheries@nt.gov.au) or 08 8999 2144

***It is an offence to kill, injure, take, trade, keep or move a sawfish or river shark species without a valid permit***

## Identifying a sawfish

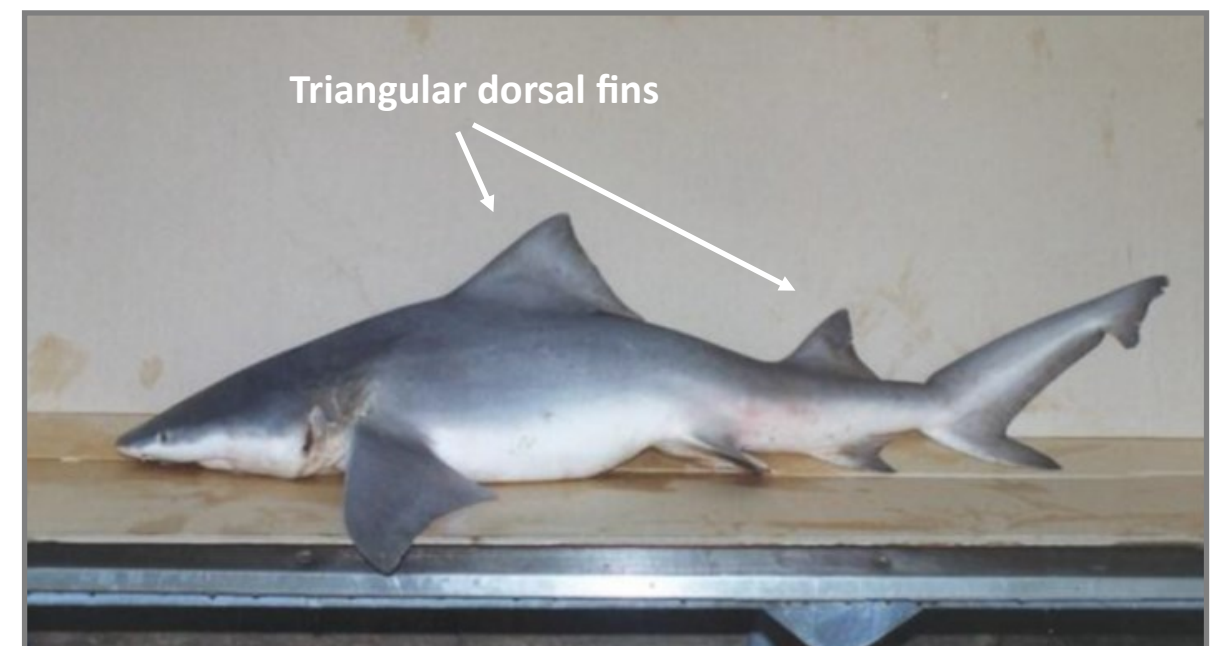
- Sawfish have a flattened body shape and a saw-like snout, called a rostrum
- Dwarf sawfish grow up to 310 cm in length
- Largetooth sawfish and green sawfish can grow up to 700 cm in length



**Left: Dwarf Sawfish**  
(Photo credit: Water Technology)

## Identifying a northern river shark

- The northern river shark is steel-grey on top and white below
- It has two triangular shaped dorsal fins on top a stocky body
- The northern river shark can grow up to 200 cm in length



**Right: Northern River Shark**  
(Photo credit: Northern Territory Government)



# Contact Us

## **Seafarms Group Limited**

Level 11, 225 St Georges Terrace  
Perth WA 6000

PO Box 7312  
Cloisters Square WA 6850

T. +61 8 9321 4111  
E. [info@seafarms.com.au](mailto:info@seafarms.com.au)